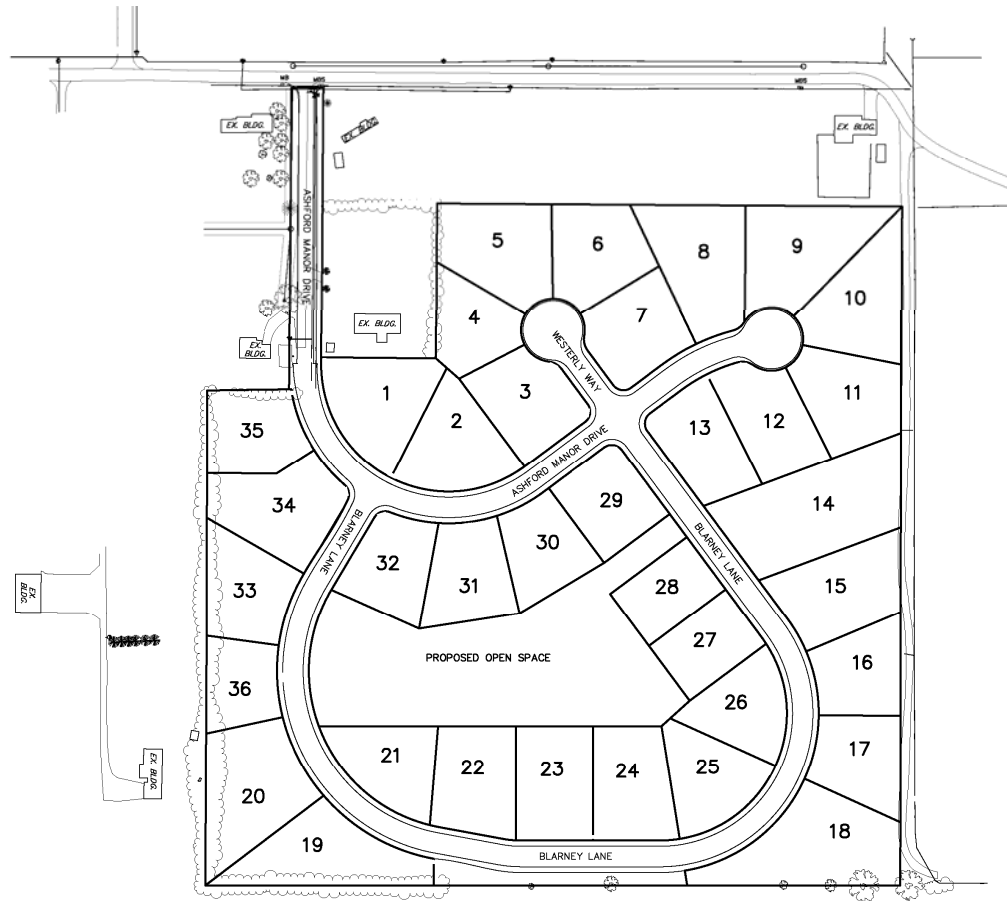


NITTANY ENGINEERING & ASSOCIATES, LLC

Subdivisions

Ashford Manor -
Centre Hall, PA



What Can We Do For You?

Nittany Engineering & Associates, LLC (NEA) is a consulting engineering firm with offices in Centre Hall, PA and Bridgeville, PA. For the past two decades we have selected the most appropriate technologies to meet our customer's goals. We understand the competitive environment of industry and the budget constraints of our clients. In order to meet our customer's goals, we commit appropriate resources to every project and have created an efficient yet flexible company structure that allows us to operate with low overhead. After the strategic goals for a project are determined, our team of experienced professionals attacks those objectives by combining traditional design experience with the latest state-of-the-art technology.

We have the capability of supplying full engineering services on all of our projects. This includes the initial surveying, drafting, designing and specifications development. As the design progresses, we obtain permits required at the federal, state, and local levels. Once the project is under construction, we provide construction stakeout, construction inspection services to ensure that the project is completed according to the design, and construction management. After construction is complete, we provide technical support for proper operation of the project. We provide a complete service from concept through construction and to final operation.

Markets & Services

Markets

- Public/Private Utilities
- Government Agencies (Municipal, Regional)
- Commercial/Industrial
- Private Developers
- Private Land Owners

Services

- Water and Wastewater Engineering
- Site Remediation
- Environmental Assessment
- Surveying
- Subdivision Planning
- Land Development
- Road Design
- Stormwater Management Design
- Erosion & Sedimentation Design

“Nittany Engineering & Associates, LLC takes pride in providing our clients with honest, ethical value-added professional services. We will serve you as your agent and partner, directing you with the recommendations that will be in your best interest. When we work for you, its not just another job, it’s another opportunity to enhance our reputation for providing the highest professional service at the most economical cost.”

Robert S. Decker, PE, President



Ashford Manor Subdivision – Pump Station
Centre Hall, PA

Project Samples	Client Contact
Stonefield Subdivison - 30 lot subdivision that included the following: boundary survey, topographic survey, lot/street layout, roadway design, SWM design, E&S design, grading, construction stakeout and setting property pins on all lots.	Chris Kunes, Partner (814) 234-5828
Ashford Manor Subdivision - 35 lot subdivision that included the following: boundary survey, topographic survey, lot/street layout, roadway design, SWM design, E&S design, public sewer / pump station design, public water design, grading, construction stakeout and setting property pins on all lots	Don E. Coyne, Developer (814) 234-0449
Stonehouse Subdivision - 33 lot subdivision that included the following: boundary survey, topographic survey, lot/street layout, roadway design, SWM design, E&S design, public sewer / pump station design, public water design, grading and setting property pins on all lots	Art Condo (570) 726-4470
Sinking Creek Subdivision - 64 lot subdivision that included the following: site survey/topographic survey, street layout/design, swales, grading, SWM design and E&S control. The plan is nearing the end of the final plan process and improvements will soon need to be installed	Chris Kunes, Partner (814) 234-5828
Jacob & Sallianne Tanis – minor subdivision creating a 10 + acre lot for agricultural use.	Jake Tanis (814) 364-2123
Russell Schleiden - Replot 2 parcels includes property survey, easements, right-of-way and legal descriptions.	Russell Schleiden (814) 422-1490